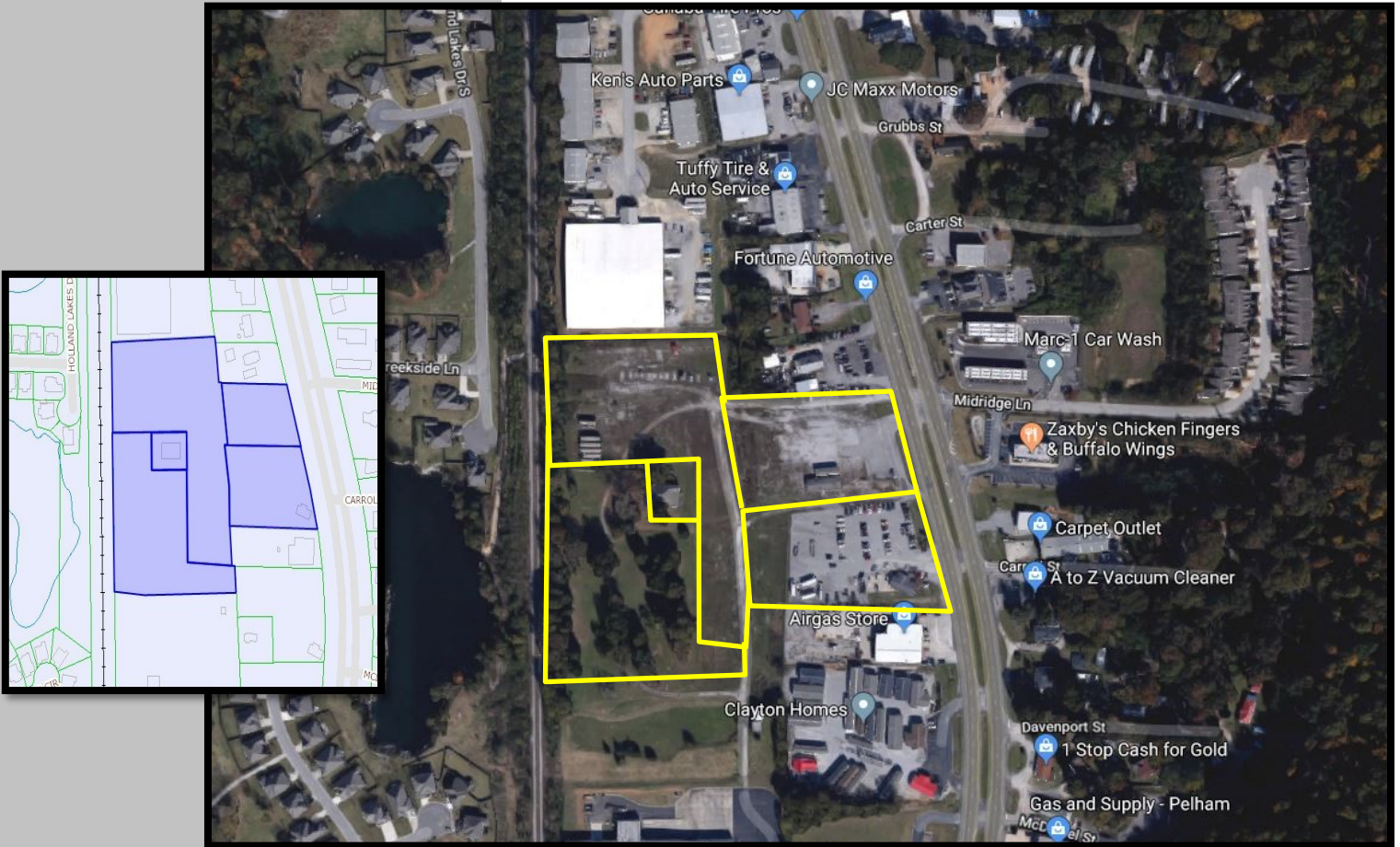


5 lots on Hwy 31 Pelham, AL 35124 \$3,500,000



Demographics	3 miles	5 miles	7 miles
Population	27,885	46,585	75,039
Avg. HH Income	\$86,552	\$91,128	\$99,304

CONTACT:

Andrew Loveman, CCIM
(205) 380-3398
Andrew@hsccommercial.com

Wes Cline, CCIM
(205) 515-7610
Wes@hsccommercial.com

Details:

- ±12 acres along Pelham Parkway/Hwy 31
- Great development site for retail, office, or multi-family
- Traffic count of 28,284 cars per day
- High visibility and easy access



HYDINGER STEWART & CHEW
COMMERCIAL PROPERTIES, LLC

2200 Woodcrest Place, Suite 330, Birmingham, Alabama 35209 | 205-380-3333 | www.hsccommercial.com

The information contained herein is from sources deemed reliable, however, Hydinger, Stewart & Chew Commercial Properties makes no warranties or representations to the accuracy thereof.