

# Montevallo

SHELBY COUNTY | ALABAMA



2022 COMMUNITY PROFILE



# City of Montevallo

SHELBY COUNTY | ALABAMA

The City of Montevallo is a quaint college town located in the southern portion of the Birmingham-Hoover MSA. Home to the state's only public liberal arts college, the University of Montevallo is the City's largest economic driver and is conveniently positioned within two blocks of Main Street. In 2012, the City of Montevallo, Shelby County Commission and University of Montevallo formed a cooperative district that consistently funds capital improvement projects in the City. Such purposeful investment has allowed for improvements to the aesthetics and infrastructure of the central business district, resulting in 31 new and announced tenants to date. Additionally, Montevallo is home to The Alabama National Cemetery and American Village, which attracts over 100,000 visitors annually. Come for a visit...we promise you'll be impressed!



**7,229**

City Population



**7%**

Population Increase Since 2010



**5,849**

City Daytime Population



**\$44,152**

City Median Household Income



**30%**

City Bachelor Degree or Higher

Source: US CENSUS | ESRI

## Retail Gaps / Leakage

Building Materials & Supplies **\$2.6 m**

Clothing & Shoes **\$2.2 m**

Furniture & Home Furnishings **\$2.1 m**

**399**

New Homes Projected by 2026



Main Street Alabama Designated Community



## ESRI Tapestry Segments

Old & Newcomers **35%**

College Towns **22%**

Traditional Living **12%**

## Key Community Assets



2,656 Students | 552 Employees



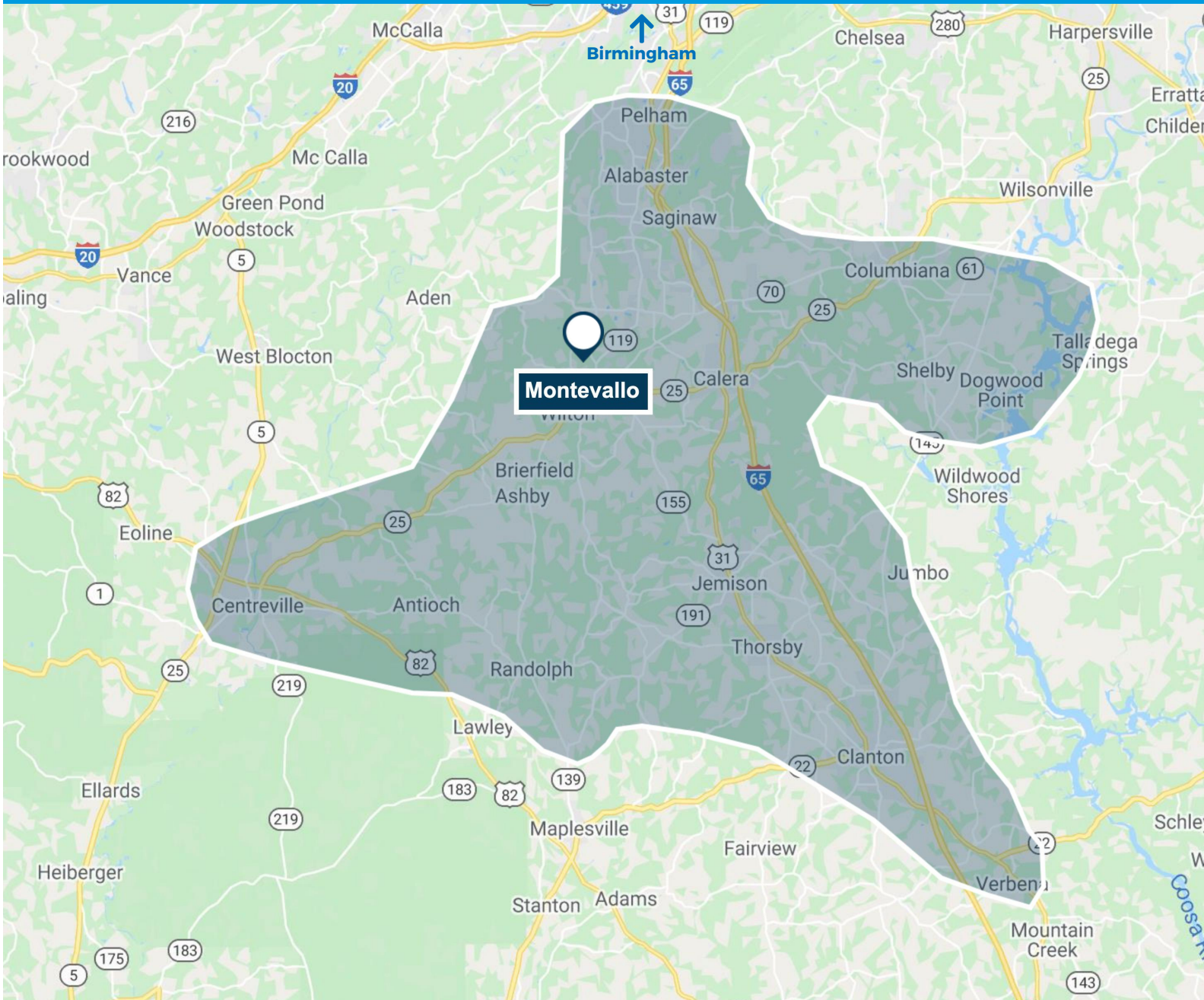
American Village



National Veterans Cemetery  
480-Acre Memorial Site

# Montevallo Trade Area

SHELBY COUNTY | ALABAMA



**145,690**

Trade Area Population



**133,779**

Trade Area Daytime Population



**\$62,550**

Trade Area Median Household Income

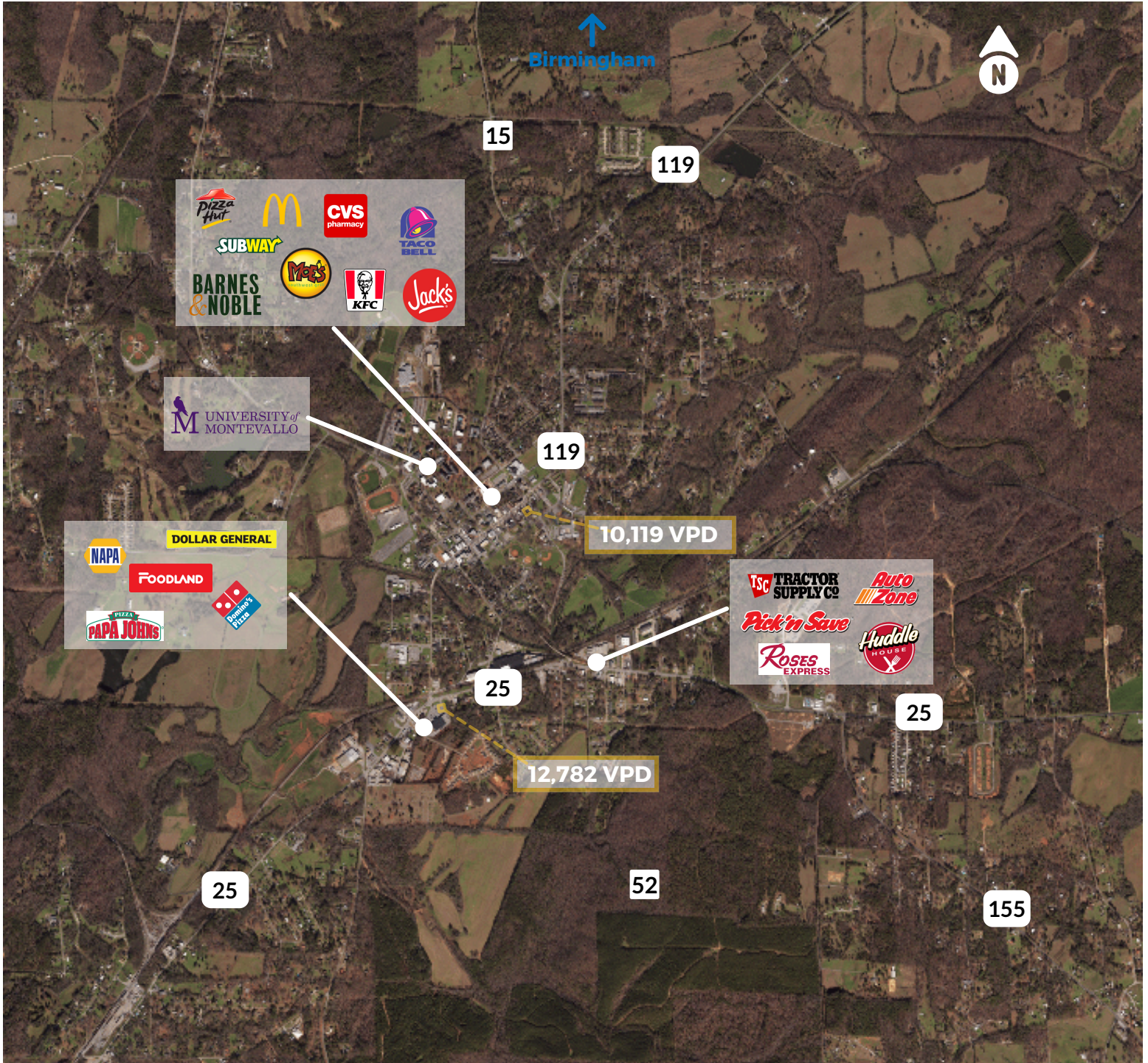


**16%**

Trade Area Bachelor Degree or Higher

# Montevallo Retail & Traffic

SHELBY COUNTY | ALABAMA



**Melody Whitten**

Director of Development | 58 INC.

(256) 558-4747

[mwhitten@58inc.org](mailto:mwhitten@58inc.org)

[www.58inc.org](http://www.58inc.org)



## Shelby County

Economic Development Corporation