

Calera I-65 Mixed-Use Development

I-65 & HIGHWAY 25
CALERA, SHELBY COUNTY, ALABAMA

Prepared By



Melody Whitten
Director of Development
256.558.4747
mwhitten@58inc.org

Calera, Alabama | Market Overview

Consistently ranked one of the fastest growing cities in Alabama, Calera is bursting with potential! A suburb of the Birmingham-Hoover MSA, Calera is situated on I-65 and benefits from location and convenience while offering a variety of housing options and excellent schools. Interstate access at three exits generate development opportunities that result in a diverse economy and strong employment base. The City is also home to Corbin Farms Winery, Ozan Winery & Vineyards, The Heart of Dixie Railroad Museum, Timberline Golf Course and a sports complex that hosts tournaments throughout the year. Calera's focus on downtown revitalization and recent adoption of a comprehensive plan further demonstrate why this community is eager to explore new opportunities!

City of Calera Demographics



16,494

City
Population



13,152

City Daytime
Population



\$60,519

City Median
Household Income

Source: US CENSUS | ESRI

Calera Trade Area Demographics



140,977

Trade Area
Population



128,152

Trade Area Daytime
Population

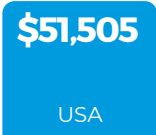
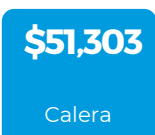
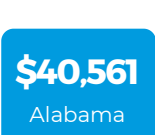


\$66,218

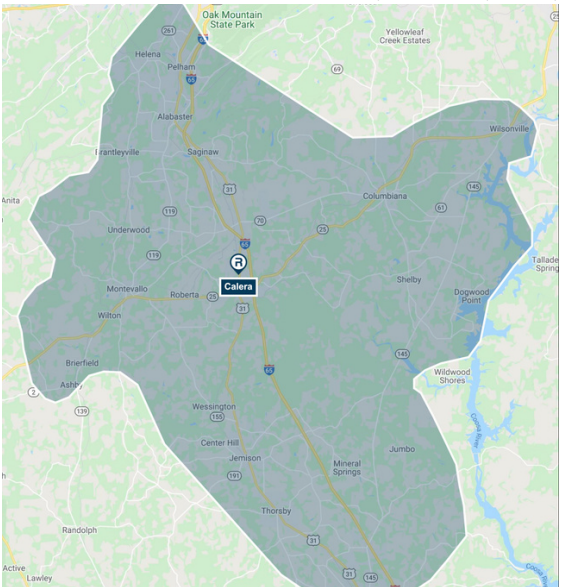
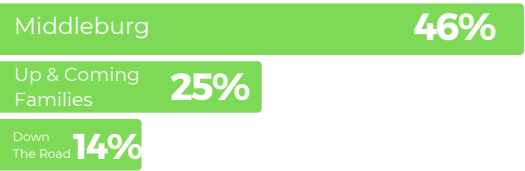
Trade Area Median
Household Income

Source: 2021 | The Retail Coach | Mobile Mapping Data

Median Disposable HH Income

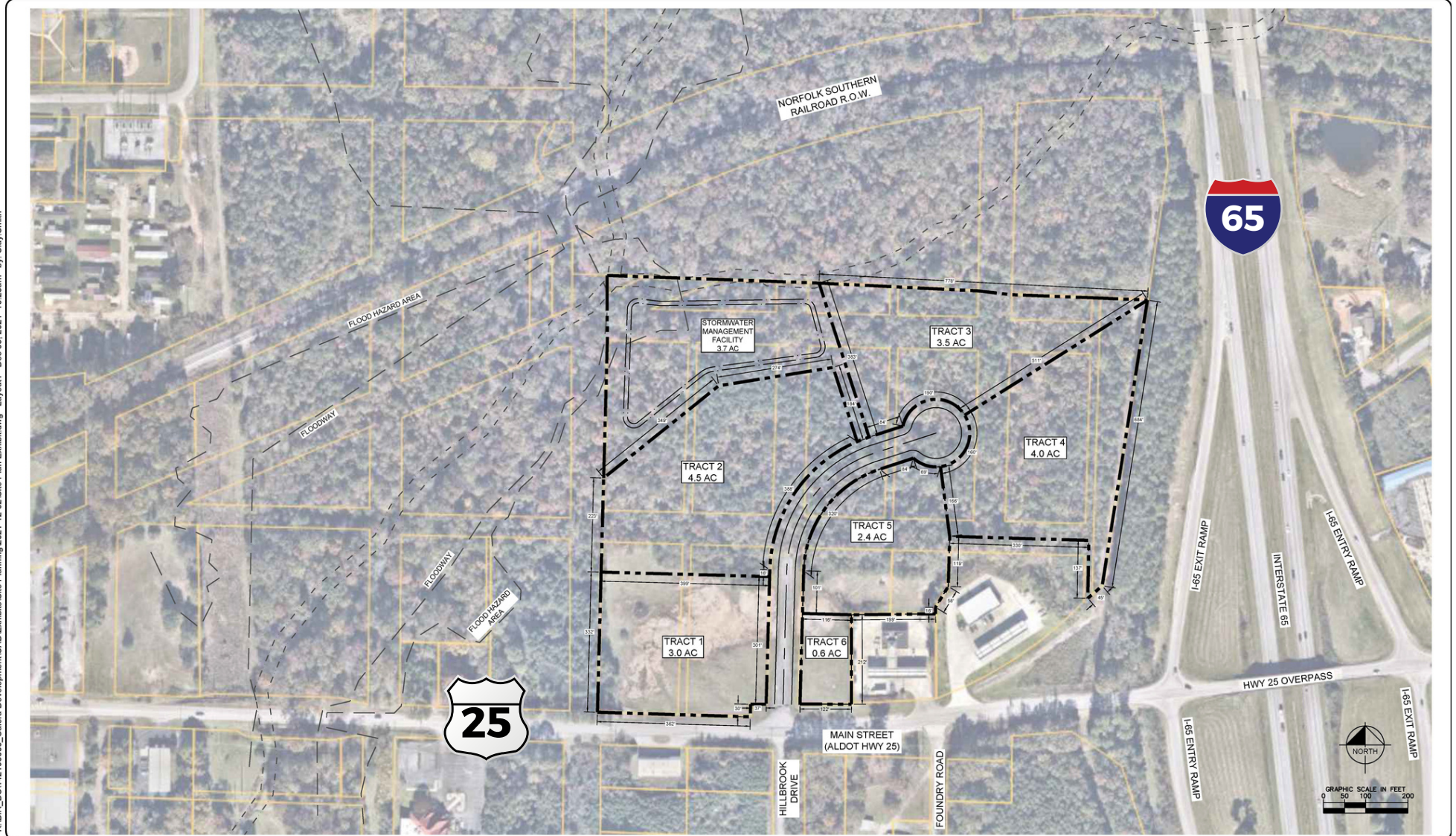


ESRI Tapestry Segments



Proposed Site Plan

K:\BIR_DS\142183000_Calera Development\CAD\Exhibits\Site Planning\2021-12-02\Site Plan Exhibit.dwg Layout1 Dec 03, 2021 10:28am by: Clay Smith



- Site located on I-65 Exit 228 and Highway 25 in Calera - prime exit for new development
- Calera is Alabama's 6th-fastest growing city - 42% increase since 2010
- Seeking developers or end users; will subdivide

Calera, Alabama Retail Map

