



Columbiana

SHELBY COUNTY | ALABAMA

2025 RETAIL OVERVIEW



Shelby County
The Natural Choice



City of Columbiana

SHELBY COUNTY | ALABAMA

Columbiana is a historic community centrally and conveniently located minutes from I-65 and US Hwy 280. This city has all the charm of a small town but with easy access to big city amenities, which is contributing to a renewed housing interest in Columbiana and resulting in new neighborhoods. Walkable from downtown is Old Mill Square, a \$10-million multi-use art facility that is an entertainment destination for central Alabama with a black box theater EBSCO Art Gallery and a rentable Grand Hall for events. In addition, Columbiana serves as the county seat and is home to Lay Lake, Lewis Lakes Vineyards and the Shelby County Board of Education. These attributes inspired community leaders to pursue a Main Street designation and dedicate resources to focus on downtown revitalization efforts. Come for a visit to see why new residents are calling Columbiana home!



4,886

City
Population



6,769

City Daytime
Population



\$68,566

City Median
Household Income



17%

City Bachelor
Degree or Higher

Source: 2024 ESRI

**Main Street
Alabama
Designated
Community**



450

New Homes
Projected by 2027



9.5%

Population
Increase Since
2020



ESRI Tapestry Segments

Southern Satellites

36%

Rustbelt Traditions

28%

Middleburg

19%

Key Community Assets



Shelby County Seat
600+ Employees



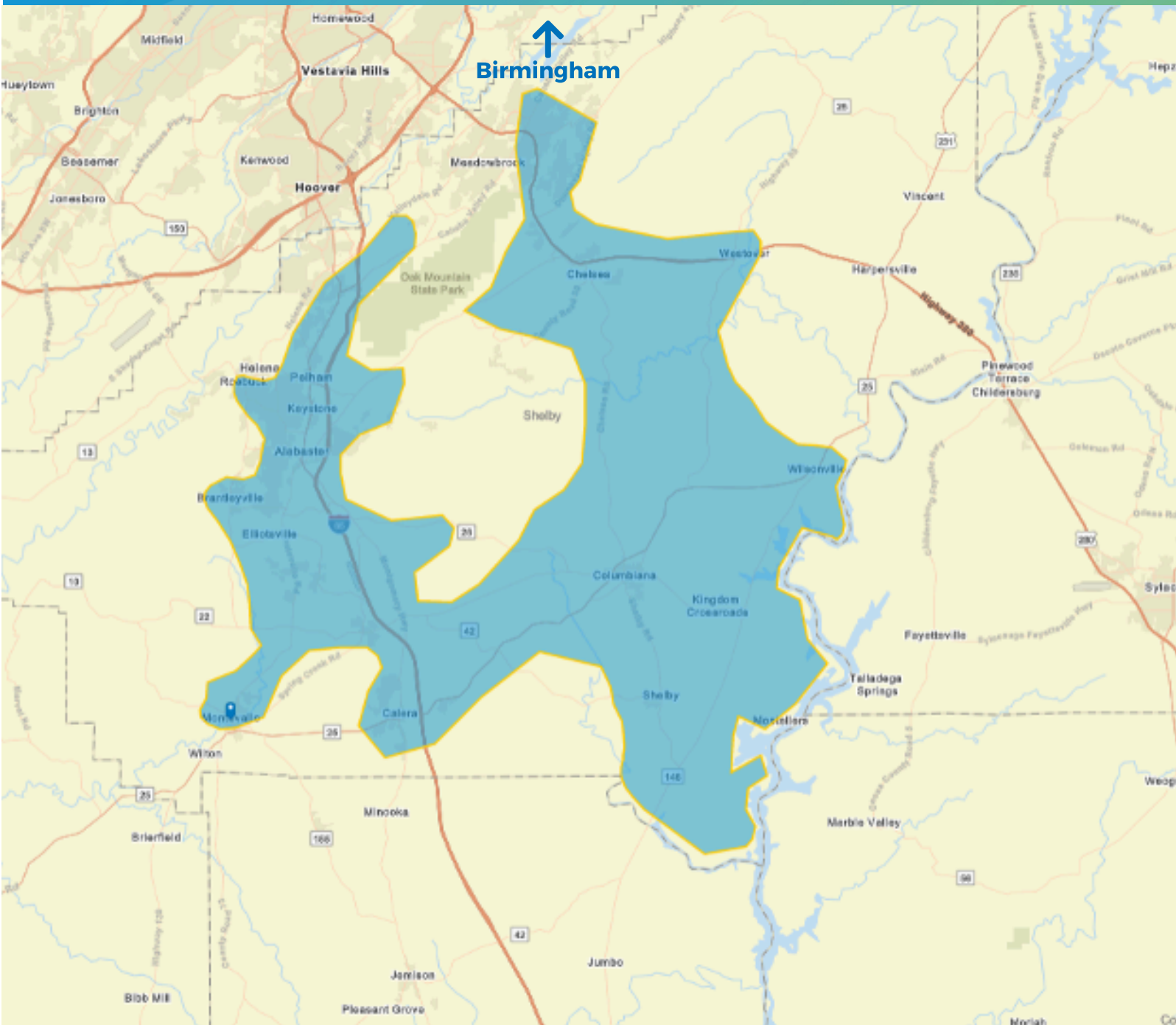
Lake Lay - Coosa River
7 Miles East



Shelby County Arts Council
& Old Mill Square Event Cent

Columbiana Trade Area

SHELBY COUNTY | ALABAMA



125,628
Trade Area
Population



115,321
Trade Area Daytime
Population



\$78,000
Trade Area Median
Household Income



31%
Trade Area Bachelor
Degree or Higher

Source: 2023 | ESRI



4,667

City
Population



6,384

City Daytime
Population

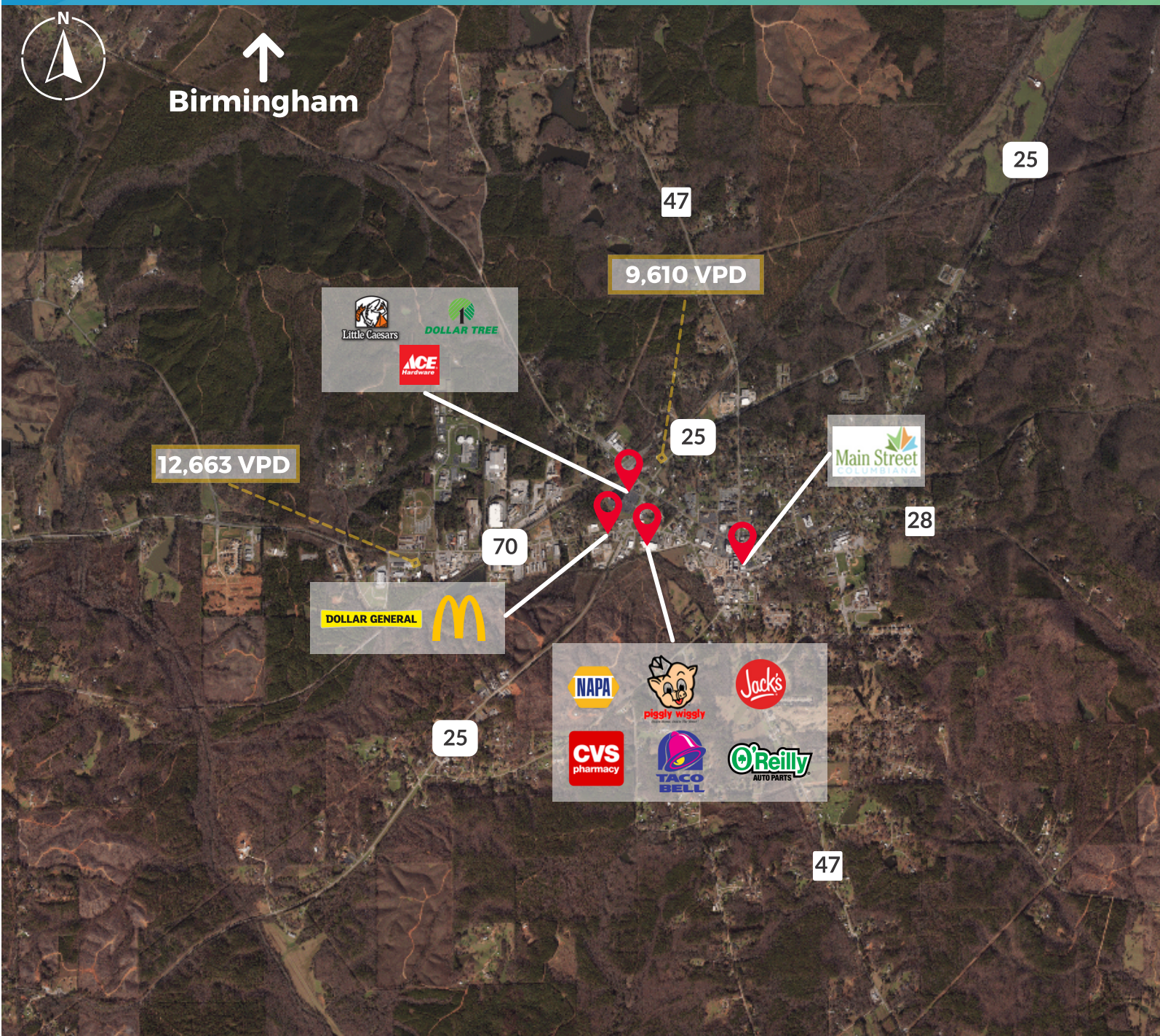


\$57,581

City Median
Household Income



Birmingham



Columbiana Retail & Traffic

SHELBY COUNTY | ALABAMA

www.58inc.org