



Columbiana

SHELBY COUNTY | ALABAMA

2024 RETAIL OVERVIEW



Shelby County
The Natural Choice

City of Columbiana

SHELBY COUNTY | ALABAMA

Columbiana is a quaint community centrally and conveniently located minutes from I-65 and US Hwy 280. This city has all the charm of a small town but with easy access to big city amenities, which is contributing to a renewed housing interest in Columbiana and resulting in new neighborhoods. The recently constructed Old Mill Square is a \$10 million multi-use art facility that is an entertainment destination for central Alabama with a black box theater, art gallery and a rentable Grand Hall for events. In addition, Columbiana serves as the county seat and is home to Lay Lake, Lewis Lakes Vineyards and the Shelby County Board of Education. These attributes inspired community leaders to pursue a Main Street designation and dedicate resources to focus on downtown revitalization efforts. Come for a visit to see why new residents are calling Columbiana home!



4,886

City Population



6,769

City Daytime Population



\$68,566

City Median Household Income



17%

City Bachelor Degree or Higher

Source: 2024 ESRI

**Main Street
Alabama
Designated
Community**



450
New Homes
Projected by 2027



9.5%
Population
Increase Since
2020



ESRI Tapestry Segments

Southern Satellites **36%**

Rustbelt Traditions **28%**

Middleburg **19%**

Key Community Assets



Shelby County Seat
600+ Employees



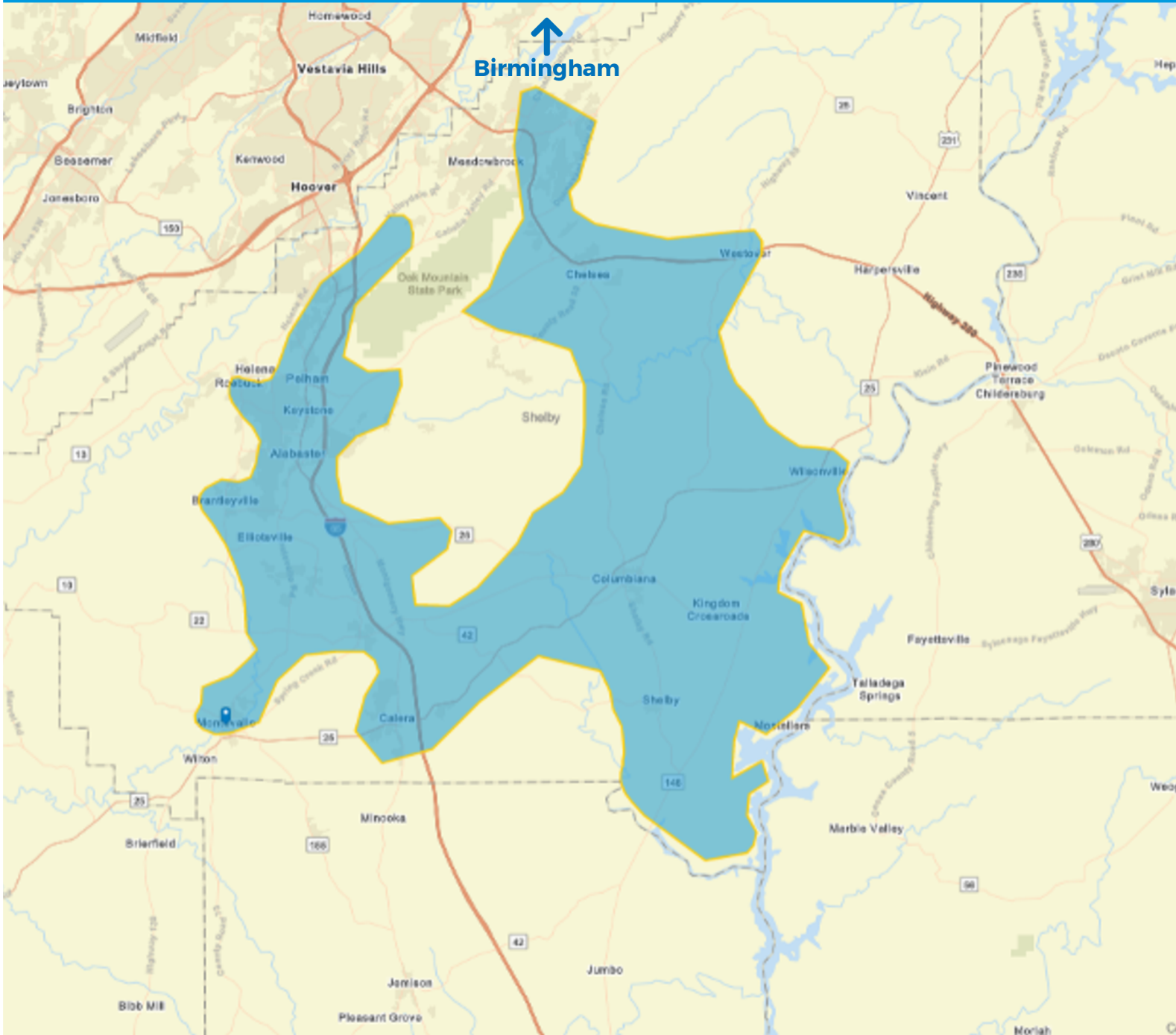
Lake Lay - Coosa River
7 Miles East



Shelby County Arts Council
& Old Mill Square Event Cent

Columbiana Trade Area

SHELBY COUNTY | ALABAMA



125,628
Trade Area
Population



115,321
Trade Area Daytime
Population



\$78,000
Trade Area Median
Household Income



31%
Trade Area Bachelor
Degree or Higher



4,667
City
Population

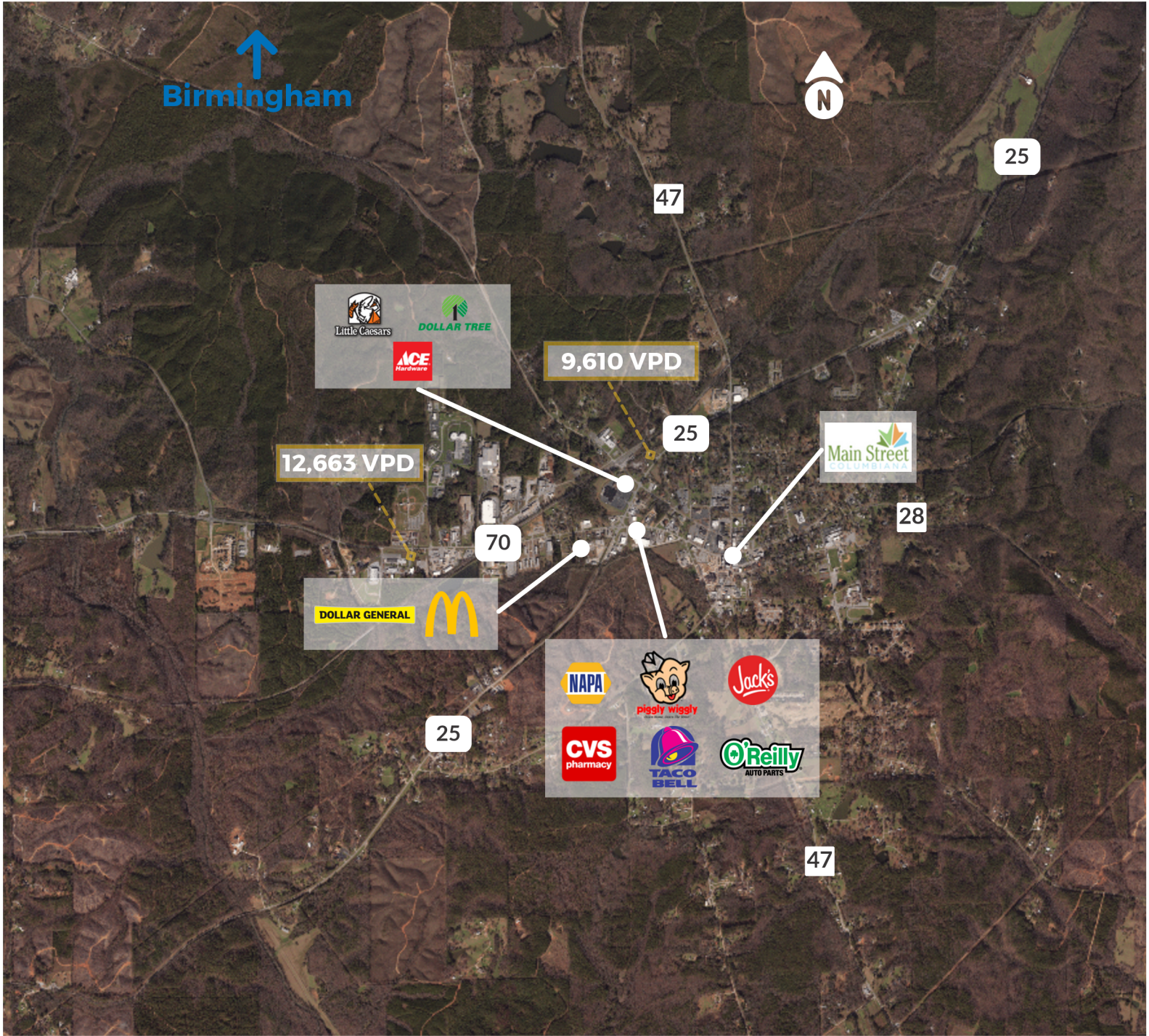


6,384
City Daytime
Population



\$57,581
City Median
Household Income


Birmingham



Columbiana Retail & Traffic

SHELBY COUNTY | ALABAMA

www.58inc.org